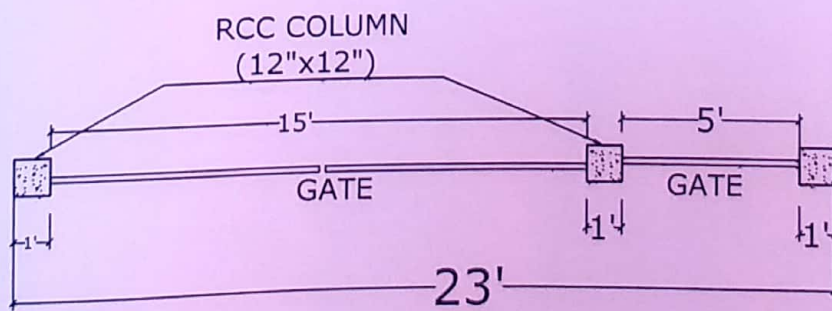
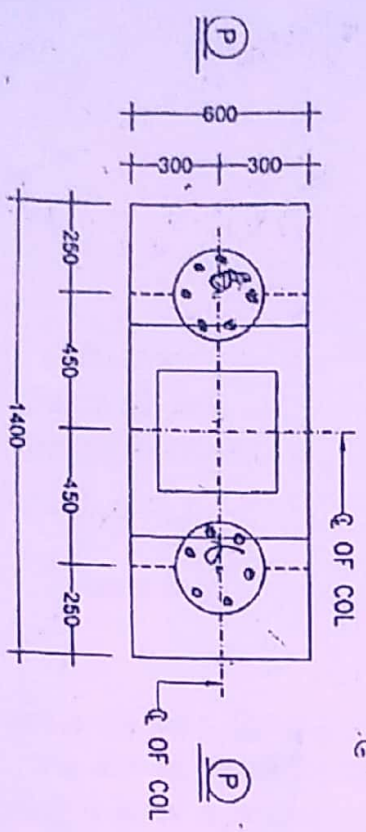


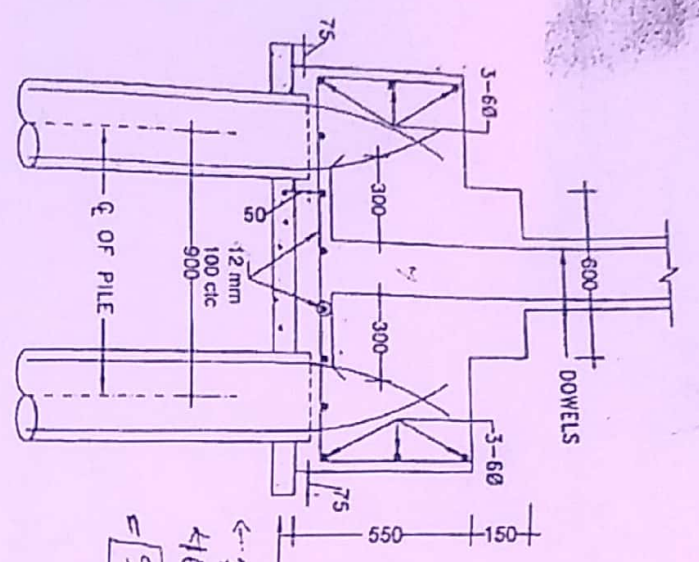
ELEVATION



PLAN

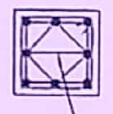


SECTION P - P



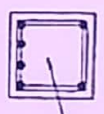
75TH P.C.C. (1:4:8)
75 Ø F S
400 - Scarf Filling
= 950 mm

COLUMN SIZE:
400X400



MAIN STEEL (6-16tor)
RING 8tor 100 C/C

BEAM SIZE:
400X400



MAIN STEEL (6-16tor)
RING 8tor 100 C/C

TYPICAL DETAILS OF UNDER REAMED PILE

